

Introducing Wade's New 96 Foot Tower

For over 50 years Wade Tower has been a leader in the light duty, free standing tower industry. Until now, our easily installed, cost effective, self-supporting tower solutions stopped at 68 feet. With our new Vista-SS-96 foot we are reaching new heights both literally and figuratively, with more products to help more customers in a wider range of applications.

★ Features

- Attractive tapered design
- Z style bracing with custom V profile leg
- Enhancements to both leg profile and taper improve installation & tower structure
- High strength galvanized steel construction
- Compact shipping package
- Easy installation process
- Free standing installation
- Ideal for wireless internet last mile, industrial / commercial communications, private networks, security and surveillance applications, amateur radio
- Configurable in nominal heights from 16 to 96 feet with exceptional wind load capacity
- Knockdown & bundled options
- Climb shields recommended

Package includes: Vista SS towers are packaged complete with CBS concrete base stubs, DM mast, top plate, rotor plate, 244A mast clamp assembly and all necessary hardware.

Note: A concrete base is required. See installation instructions for more information.

👍 Benefits

- ▶ Nested 8 foot sections on a custom pallet for compact warehouse and transport-friendly shipping package
- Easy 2 person install with very few tools required
- Factory assembled sections reduce on-site installation time and cost
- Climbing safety standards available
- High strength-to-weight ratio - lightweight, small footprint



⚙️ Applications

- Rural broadband
- Internet Service Provider point to point, point to multi-point
- Industrial and Commercial Wireless communication infrastructure
- Satellite Internet and TV antenna mounting
- Video Surveillance
- Mesh radio networks
- Private networking including Wi-Fi and 5G installations
- Cell network coverage extensions
- Off grid small wind turbine / solar
- Rail to trackside communications
- Mesonets (environmental monitoring stations)
- 2 way radio antennas
- Lighting (construction / parks & rec)
- Amateur radio

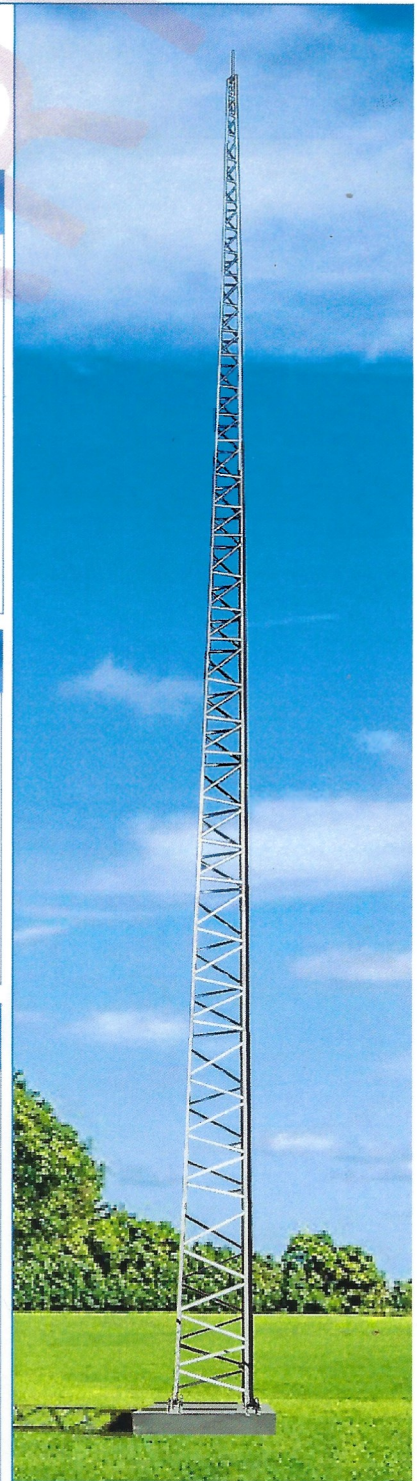
👉 Load Limits

*The VISTA SS Tower is designed to support up to 3 ft² (0.28 m²) projected wind area at 96 feet.

WARNING! Guy wires must be used for larger loads. However, these configurations have not been tested to CSA standards CSA-S16-09 and CSA-S37-13 for loadings larger than what is indicated above.

**Designed to withhold climber impact in case of fall in accordance with CSA-S37-13. See instructions for further information.

Consult a qualified structural engineer prior to installing any tower or supporting structure. Our published installation guidelines are for standard towers and mounting devices as specified, based on assumed soil conditions (190KPa or 4000 PSF) that may or may not exist in your area.



*Tower load limits are based on survival, and cannot be stamped by a licensed engineer.

**Towers have not been tested to be in compliance with other sections of CSA-S37-13.

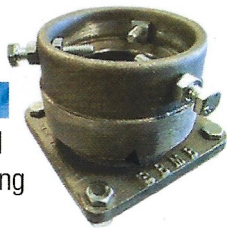
WADE Antenna Inc.
29 Sharp Road, Brantford, Ontario
N3T 5L8 Canada
Tel: 519.756.7157 Fax: 519.756.5056

800.463.1607
sales@wadeantenna.com
www.wadeantenna.com

SPEC0100_A01

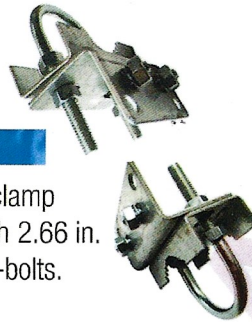
BBMB

Cast aluminum ball bearing mast bearing accepts up to 2 in. (5.1 cm) mast.



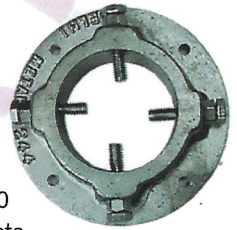
TMCA

Set of 2 mast clamp assemblies with 2.66 in. (6.75 cm) ID U-bolts.



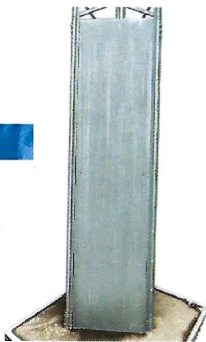
244A

Cast aluminum mast clamp for up to 2.5 in. (6.4 cm) masts.



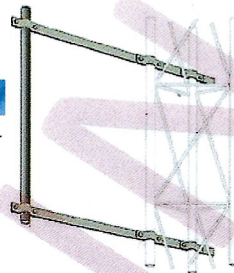
CS-12

Set of 3 steel anti-climb shields.



VISTA STM

Side tower mount for bent leg tower.



DM MAST

1.5 in. \16 ga. \ 8 ft. (3.8 cm \16 ga. \ 2.4 m)
Included with DMX standard and DMXB tower packages.



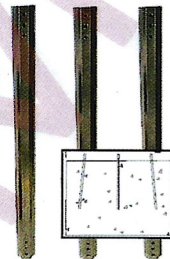
TOP/ROTOR PLATE

Pre-drilled top or rotor plate for DMX sections 1 through 4



BASE STUBS

Set of three concrete base stubs, 40 in. (102.2 cm) long.



HARDWARE KIT

Full set of nuts, bolts and washers.



Caution Notice

Please Read Carefully

Our published installation guidelines are for standard towers and mounting devices as specified. These guidelines are based on assumed soil and weather conditions that may or may not exist in your area and on the assumption that no damage has occurred or modifications made to the tower or mounting device.

A qualified structural engineer should be consulted prior to installing any tower or supporting structure.

WARNING

Survey your installation site NOW to prevent your antenna or support from coming in contact with overhead powerlines. Caution should be used when climbing towers and support structures.

FAILURE TO EXERCISE CAUTION MAY RESULT IN SERIOUS INJURY OR DEATH.

WADE ANTENNA'S ONGOING POLICY OF CONTINUING DEVELOPMENT MAY RESULT IN SPECIFICATION CHANGES TO ITS PRODUCTS